

LinkPoint for NetSuite CRM

Installation Tutorial
Lotus Notes Edition



Installation Overview...

LinkPoint's 3 Step Installation Process

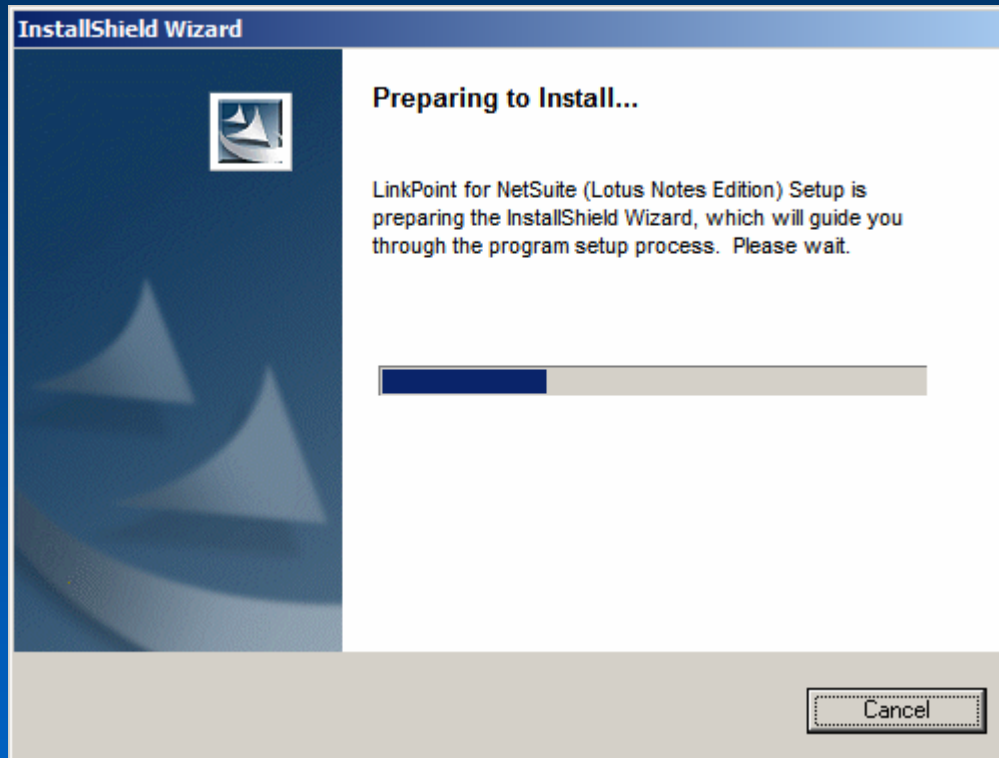
- 1. LinkPoint Software Installation.**
- 2. LinkPoint Software Configuration.**
- 3. Lotus Notes Component Installation.**

Step 1

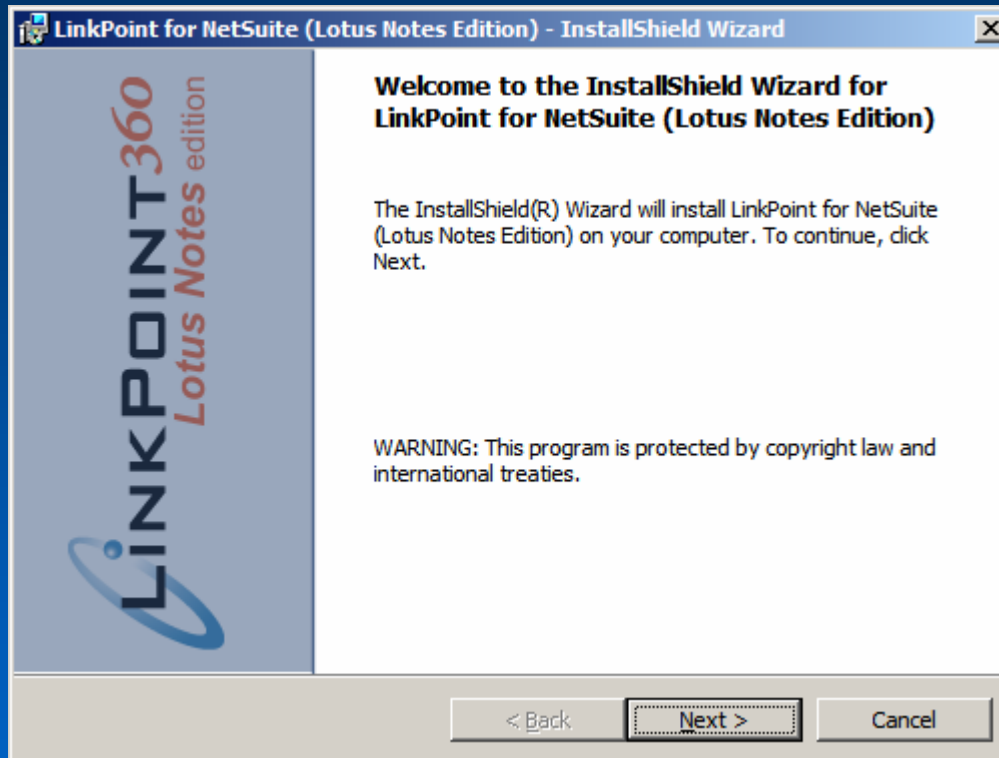
LinkPoint Software Installation



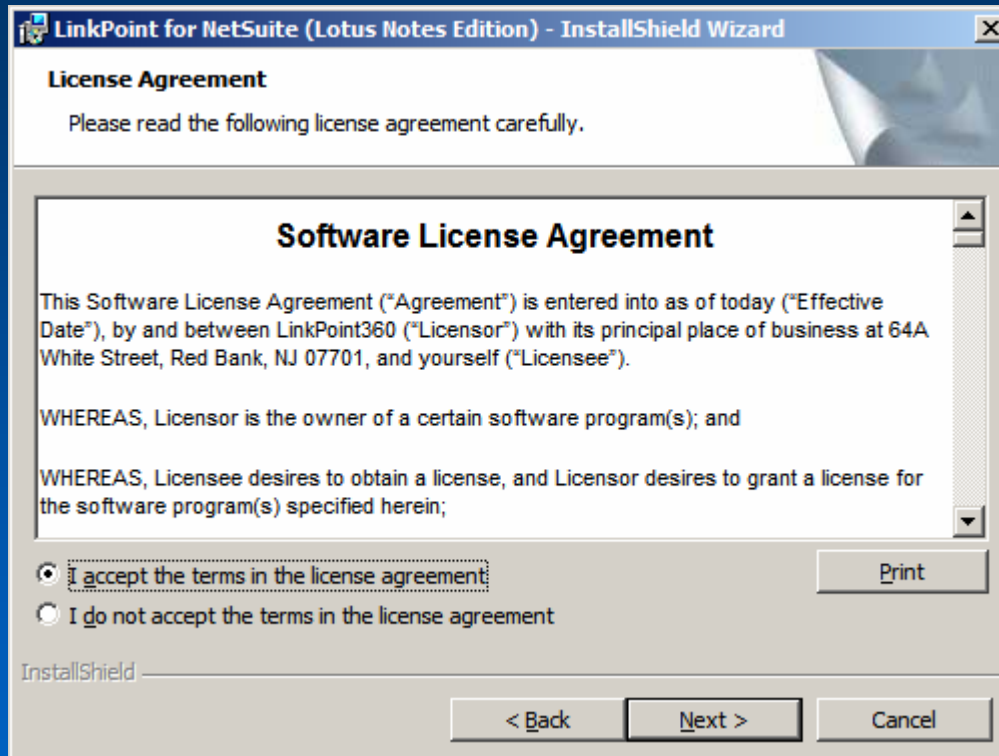
Start the LinkPoint for NetSuite CRM installation.



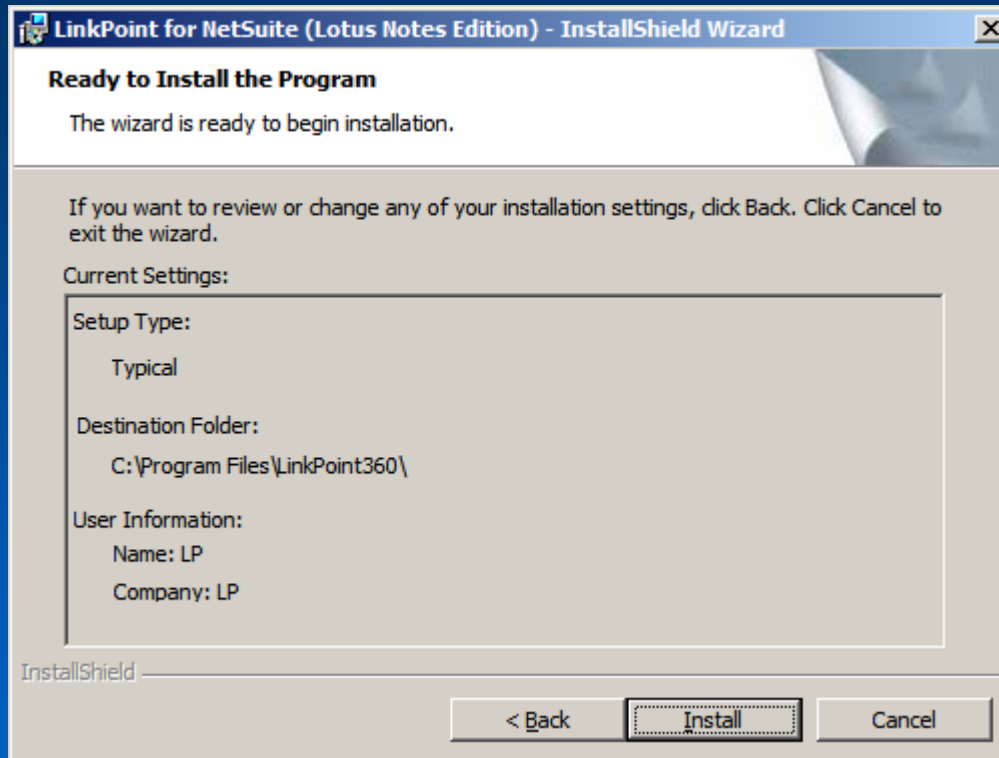
The LinkPoint installation wizard will guide you through the installation.



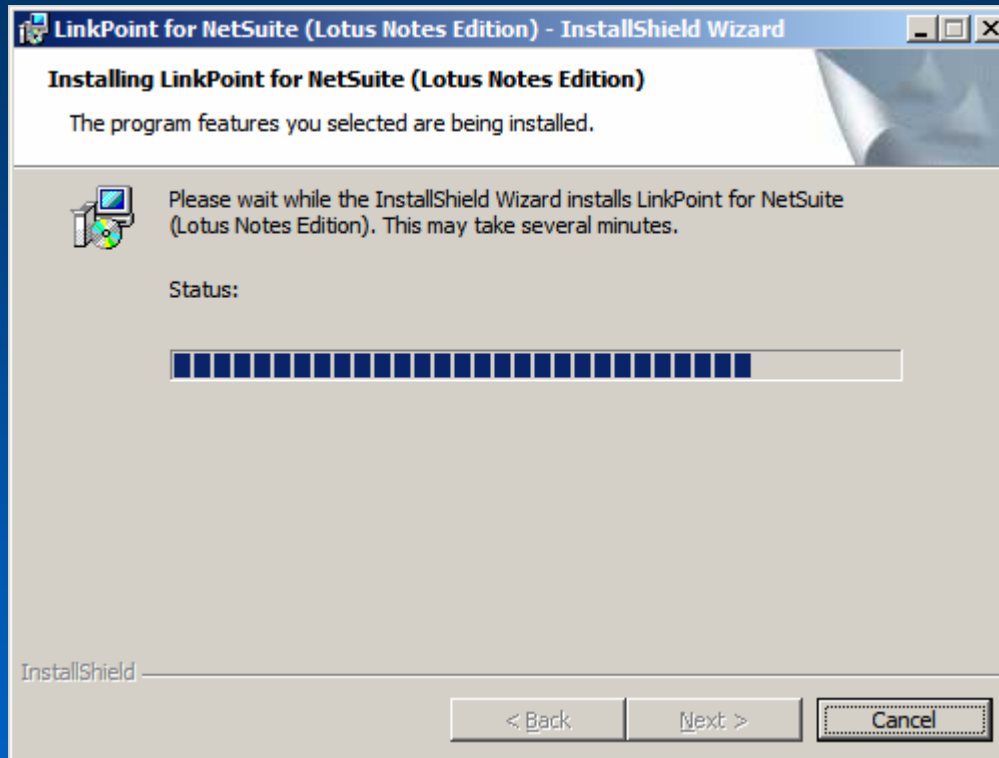
Click "Next" to begin the installation.



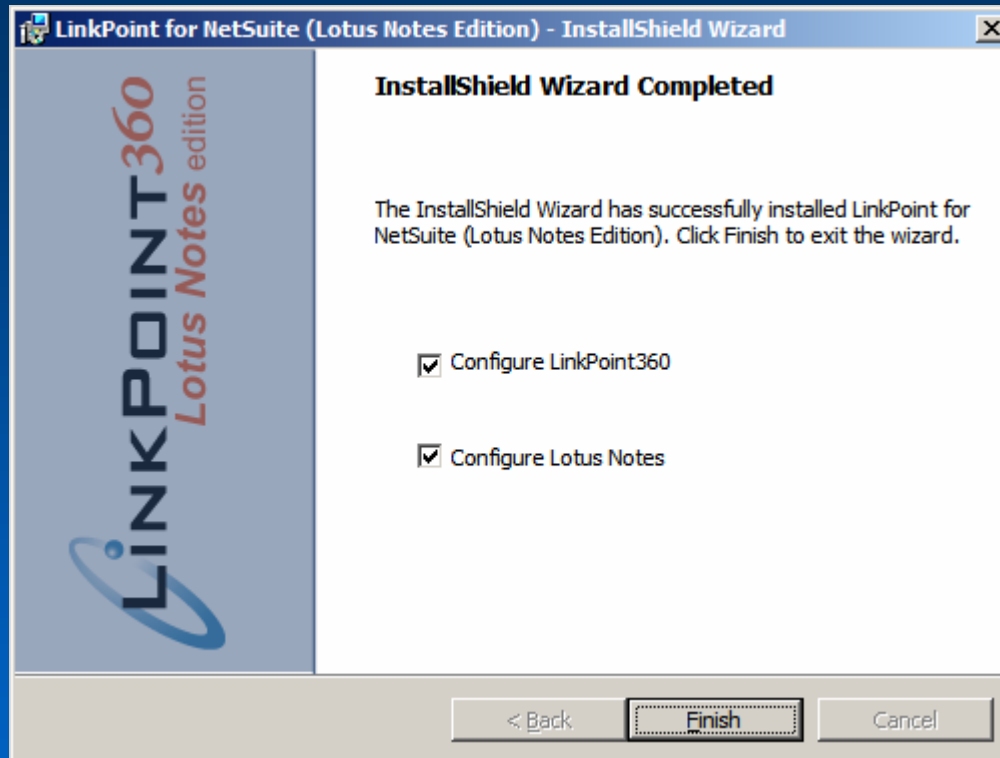
Click “I accept the terms in the license agreement”, then click “Next”.



Click “Install” to begin the installation.



The LinkPoint install wizard is now installing the software. This may take several minutes.



Click “Finish” to configure the LinkPoint software and to install the Lotus Notes Component.

Step 2

LinkPoint Software Configuration

LinkPoint Assist - LinkPoint for NetSuite / Lotus Notes

Credentials Proxy NetSuite Lotus Notes Updates Sync Other

License Information:

Email Address:

Pass Key:

This evaluation license expired on Thursday, January 11, 2007

NetSuite Credentials:

User Name:

Password:

Confirm:

Test Connection

Lotus Notes Credentials:

User Name:

Password:

Confirm:

Test Connection

Exit Ok

Ready

Enter in your email address.

Enter the Pass Key supplied to you from LinkPoint360. This Pass Key is only available when you purchase the software.

Enter your NetSuite CRM user name and password under salesforce Credentials.

Enter your Lotus Notes password under Lotus Notes Credentials.

The screenshot shows a window titled "LinkPoint Assist - LinkPoint for NetSuite / Lotus Notes". It has a tabbed interface with tabs for "Credentials", "Proxy", "NetSuite", "Lotus Notes", "Updates", "Sync", and "Other". The "NetSuite" tab is selected. Inside the dialog, there are two input fields: "NetSuite Account:" which is empty, and "Service URL:" which contains the text "https://webservices.netsuite.com/services/NetSuitePort_2_5". At the bottom of the dialog, there are "Exit" and "Ok" buttons. The status bar at the very bottom of the window says "Ready".

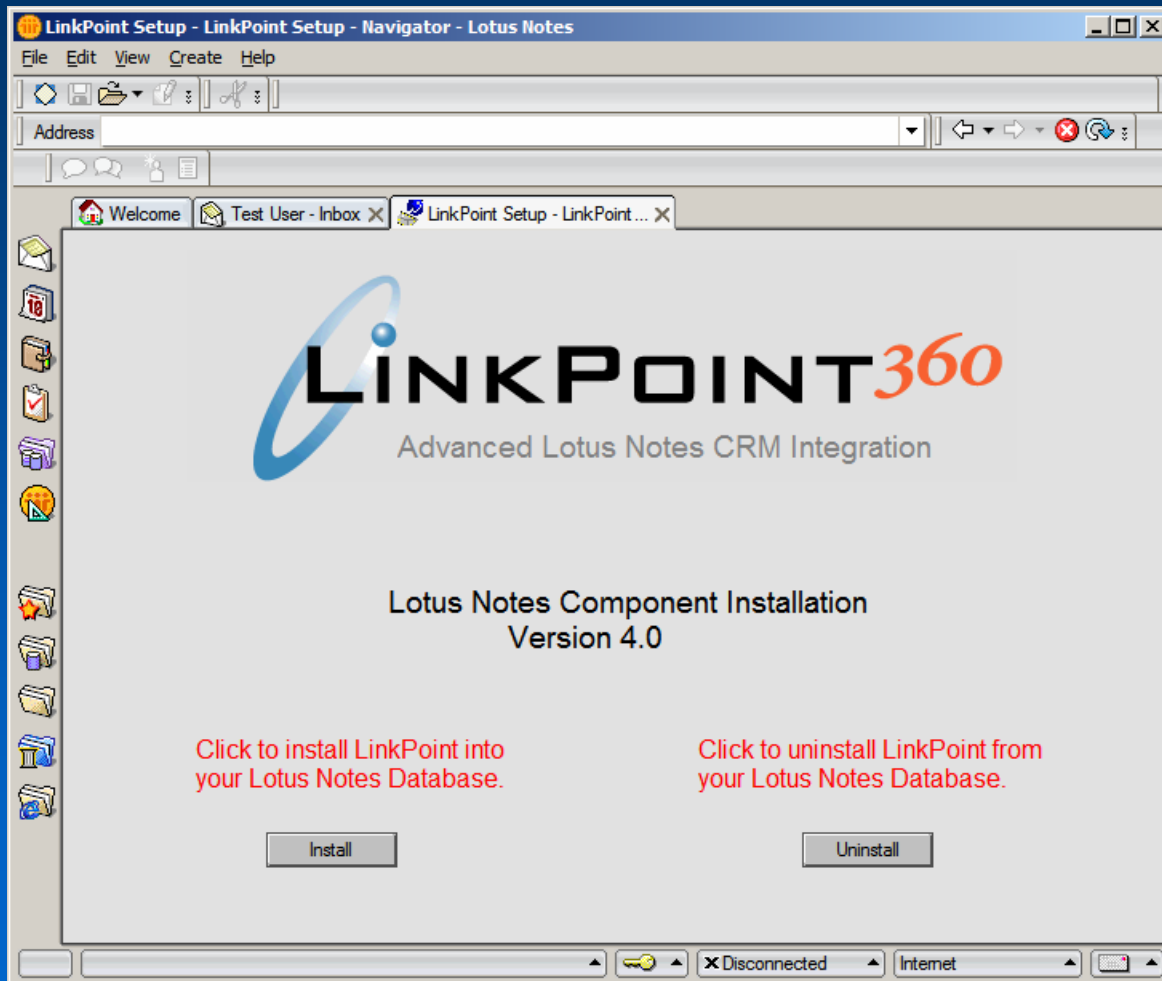
Enter in your NetSuite Account Id.

This can be found by clicking on the following menu options:

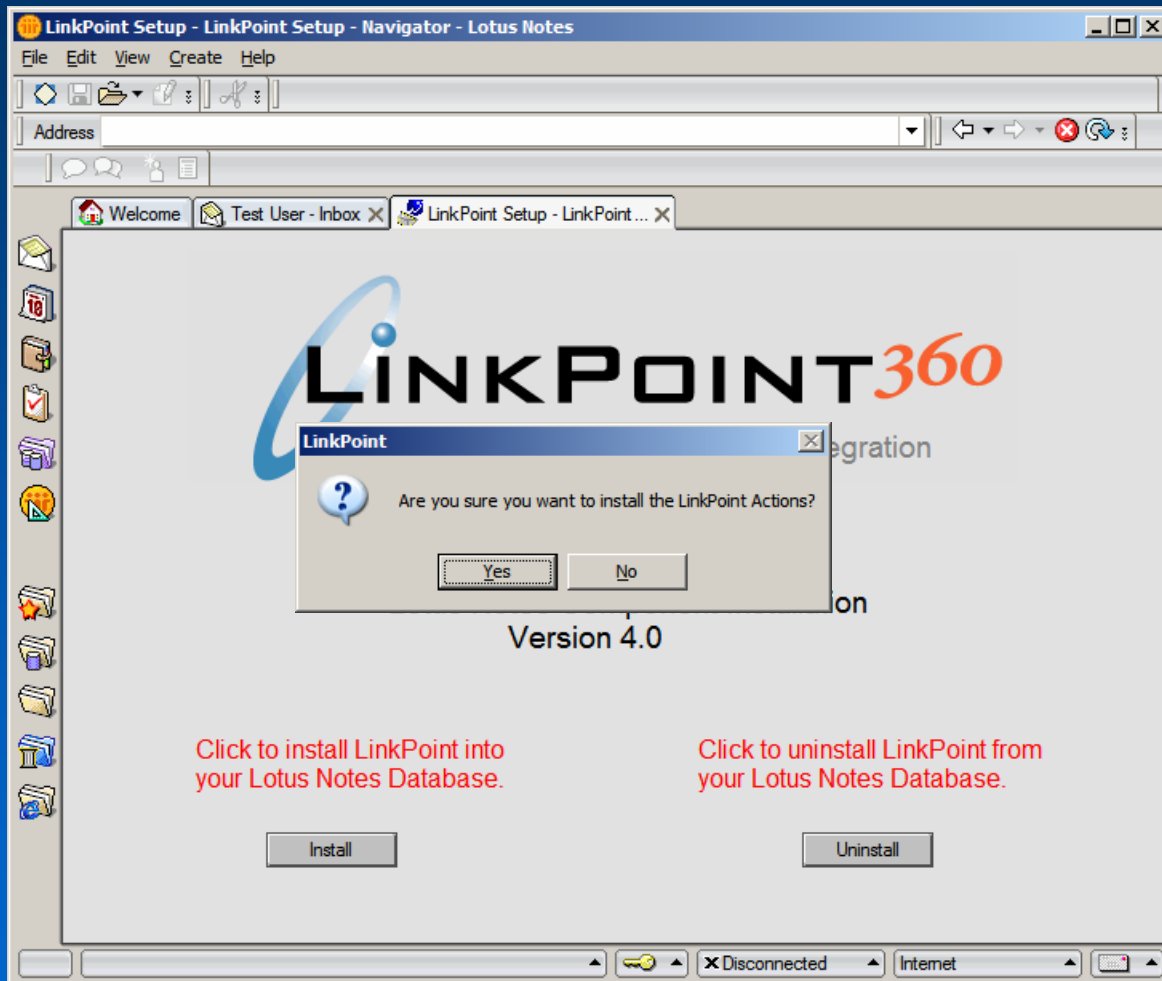
Support > Customer Service >
Contact Support By Phone

Step 3

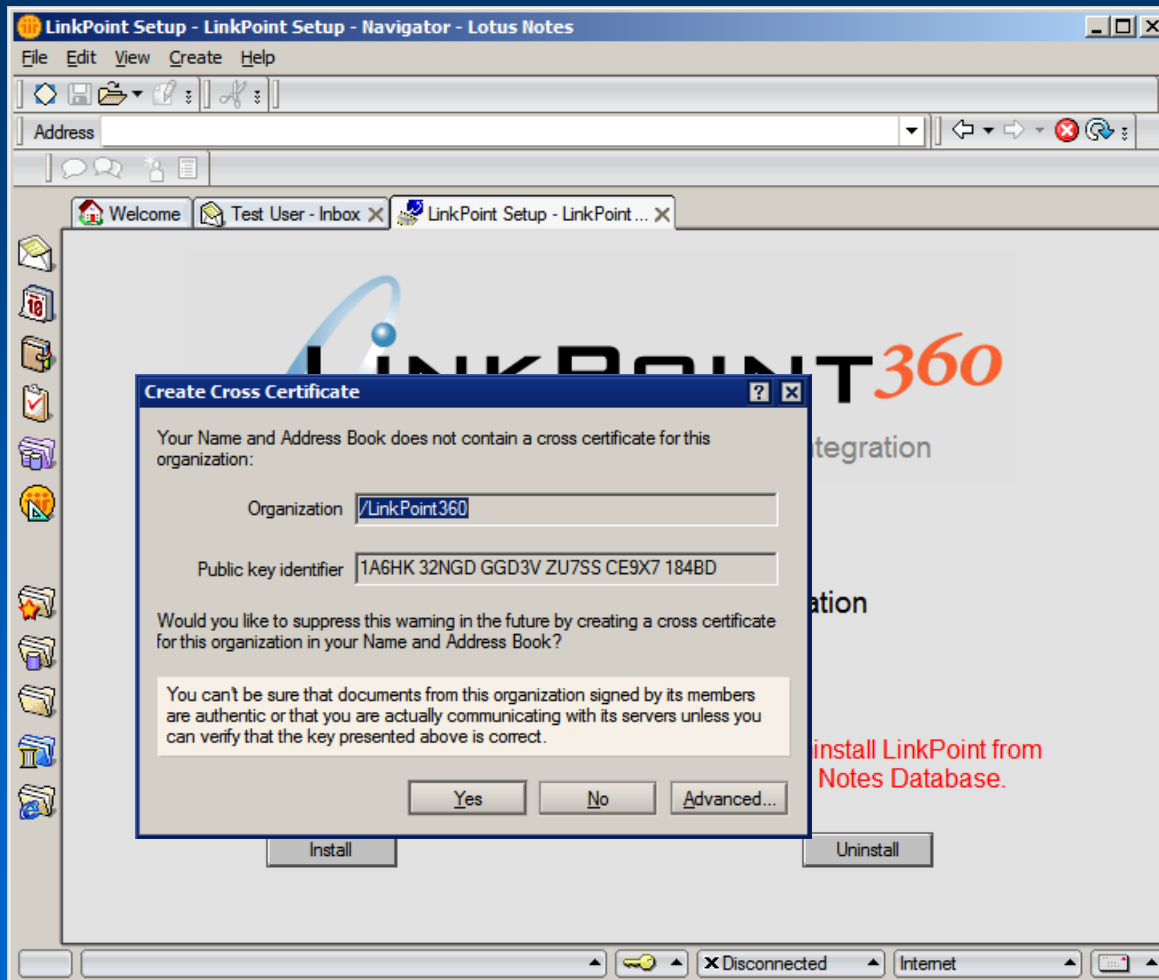
Lotus Notes Component Installation



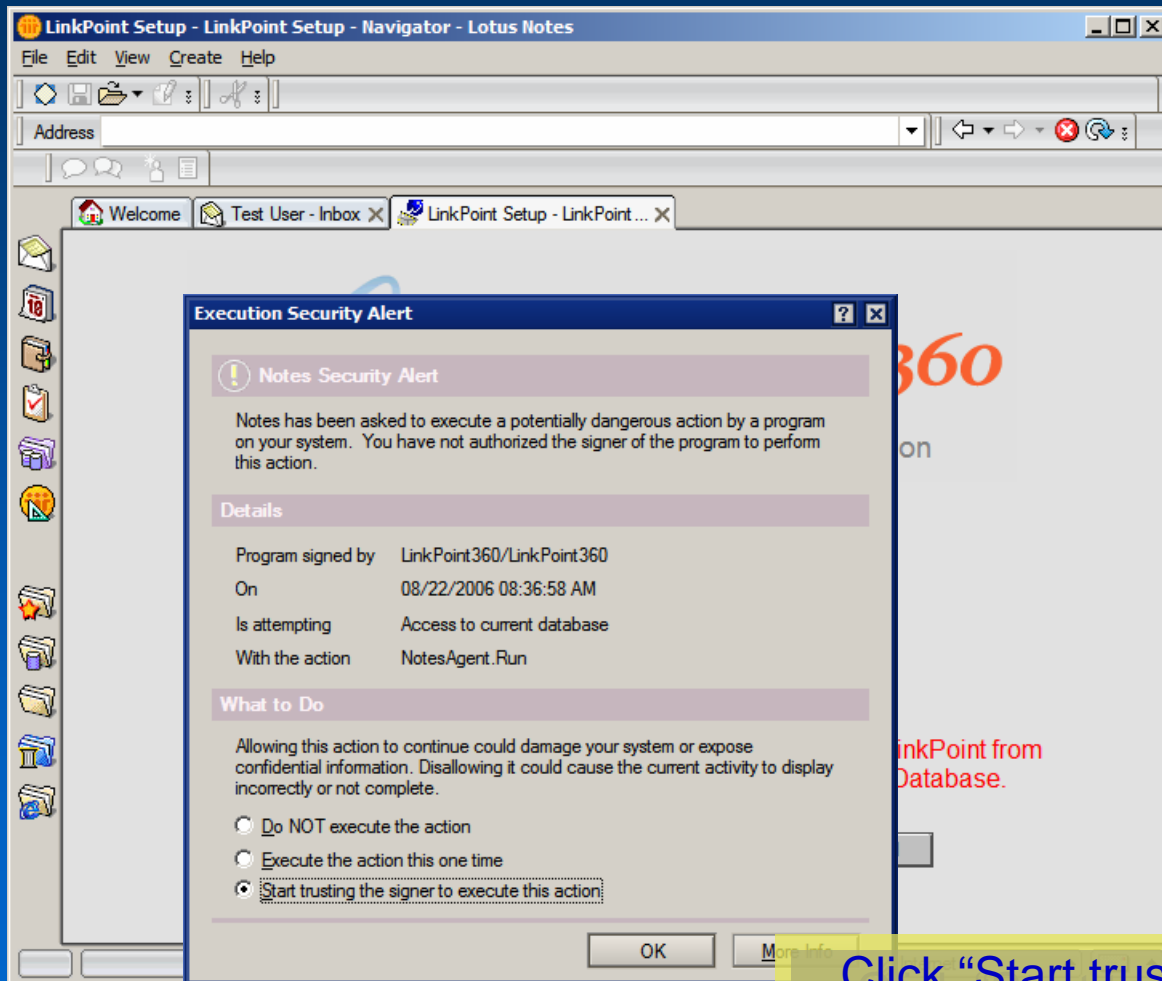
Click "Install" to begin the Lotus Notes Component Installation.



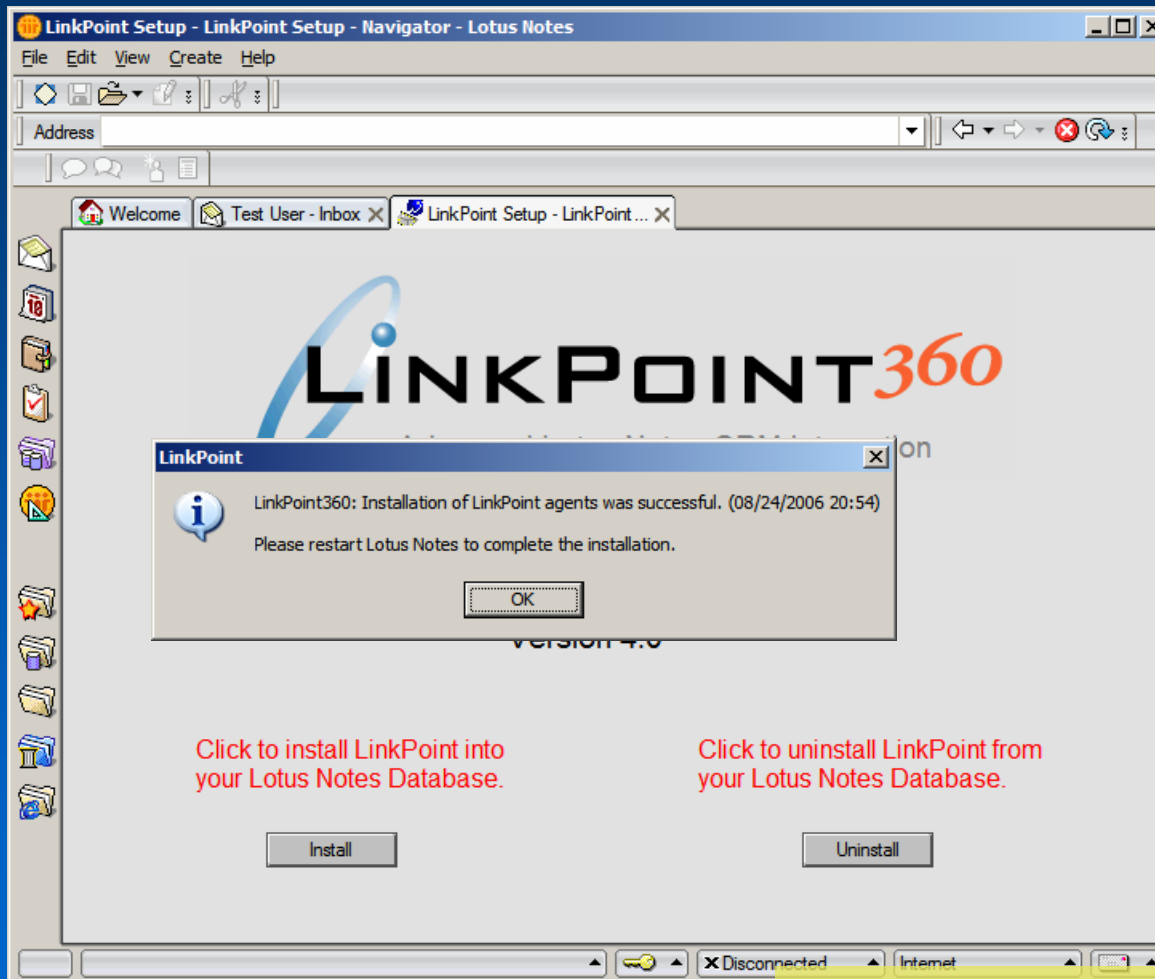
Click "Yes" to confirm the installation.



Click "Yes" to accept the LinkPoint Certificate.



Click “Start trusting the signer”, then click “OK”. You may get several of these screens throughout the installation process.



The Lotus Notes Component installation is now complete. Click "OK" and restart Lotus Notes.

Contact Information

The LinkPoint installation tutorial is now complete.
Please contact us for additional Sales or Support
questions.

Sales: 732-212-8401
Support: 732-212-8403

E-mail: info@LinkPoint360.com

Web: <http://www.linkpoint360.com>