

LinkPoint for salesforce.com

Installation Tutorial
Novell GroupWise Edition



Novell® GroupWise®



Installation Overview...

LinkPoint's 2 Step Installation Process

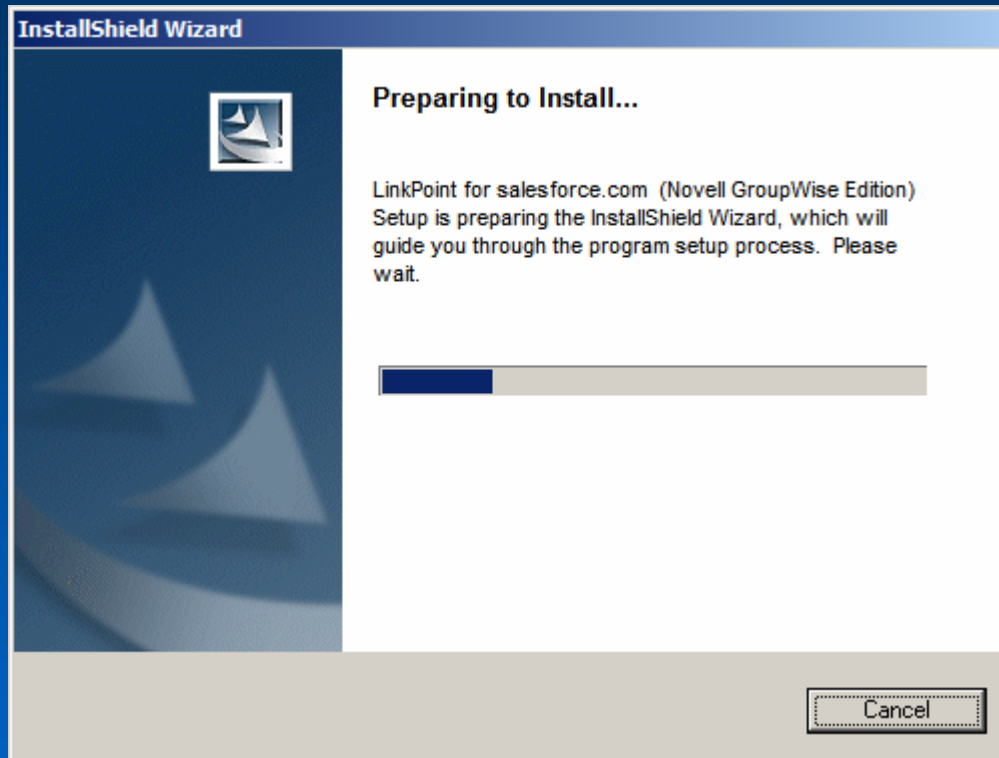
- 1. LinkPoint Software Installation.**
- 2. LinkPoint Software Configuration.**

Step 1

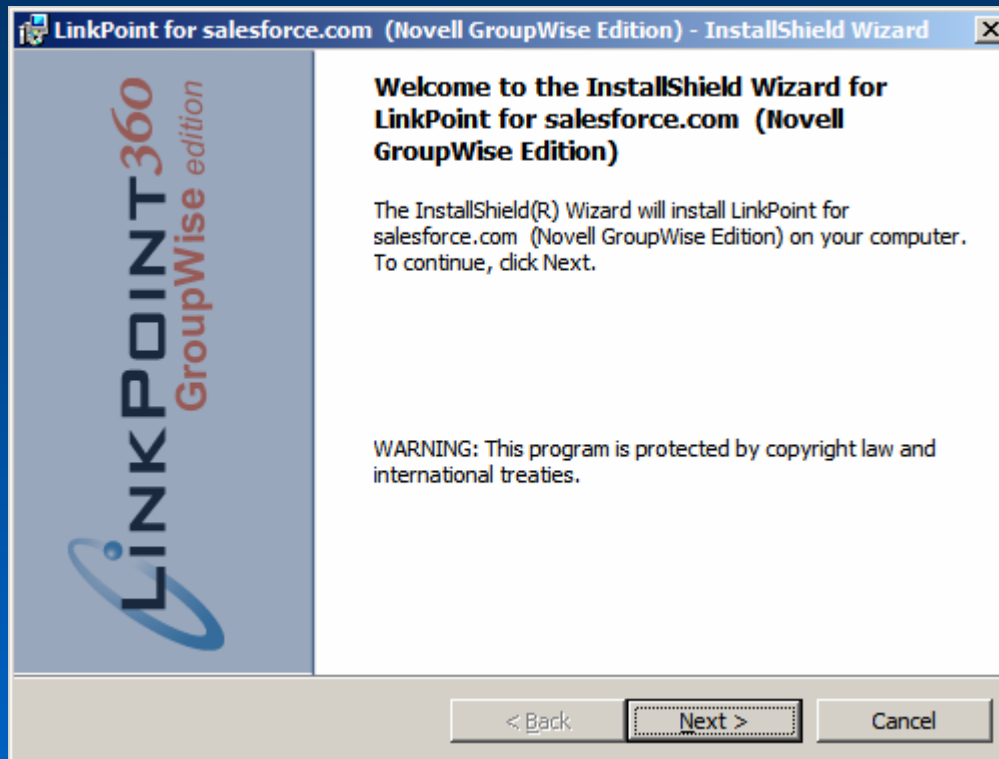
LinkPoint Software Installation



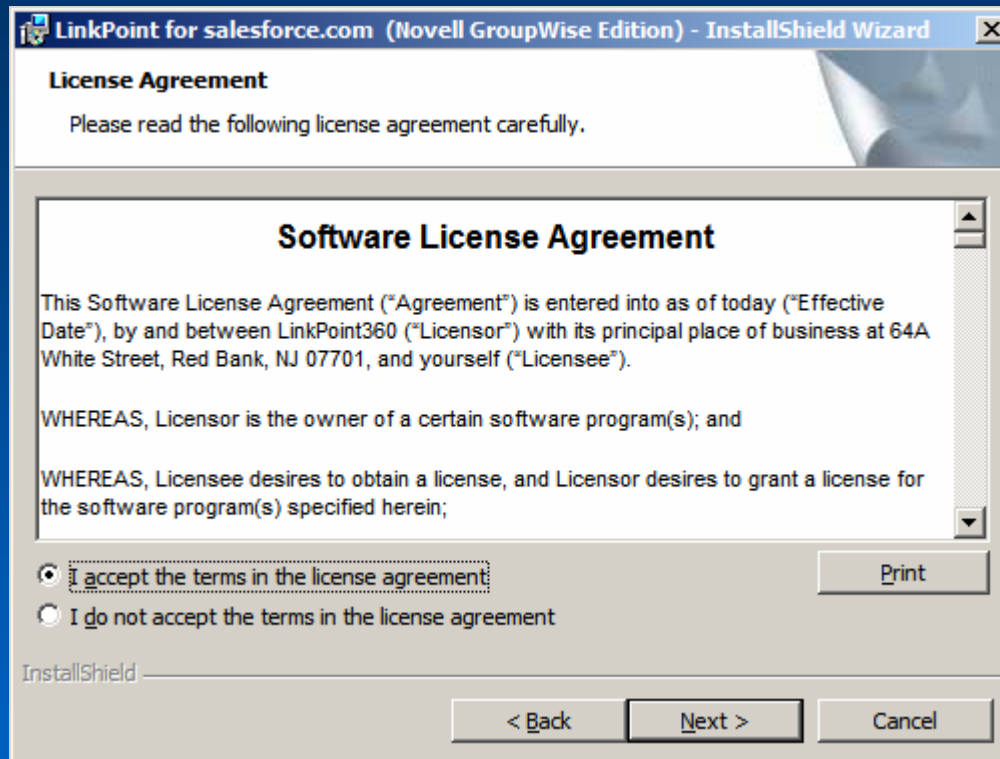
Start the LinkPoint for salesforce.com installation.



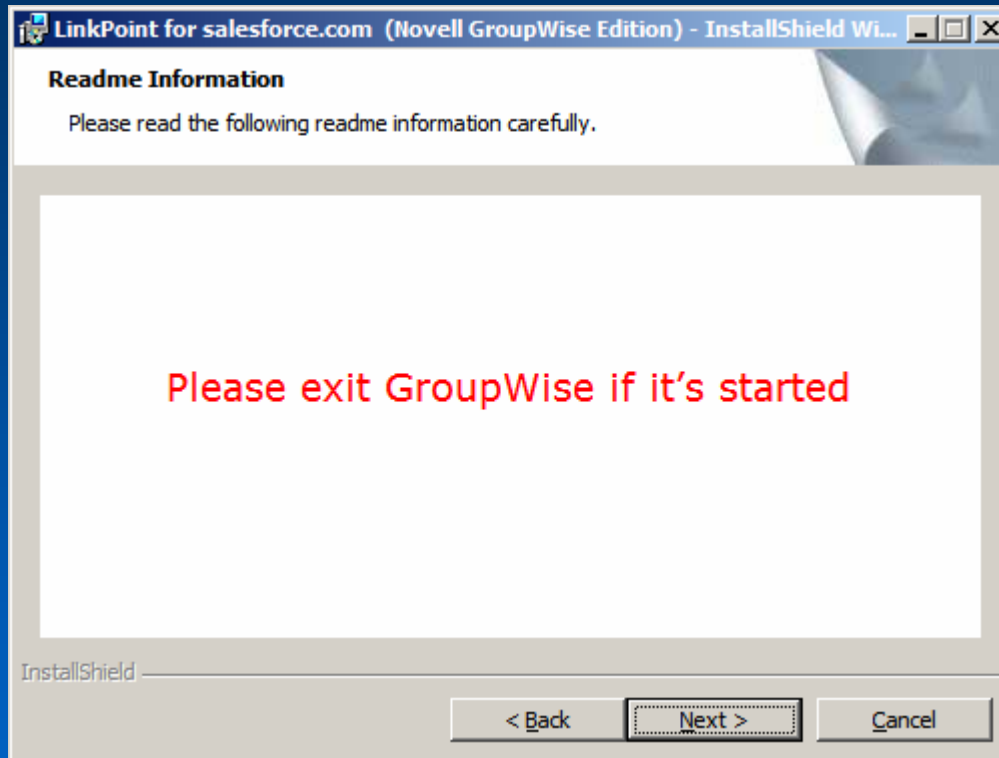
The LinkPoint installation wizard will guide you through the installation.



Click "Next" to begin the installation.



Click "I accept the terms in the license agreement", then click "Next".



Make sure you exit Novell GroupWise, then click “Next”.

LinkPoint360 for Microsoft CRM Novell GroupWise Edition - InstallShield Wizard

Customer Information

Please enter your information.

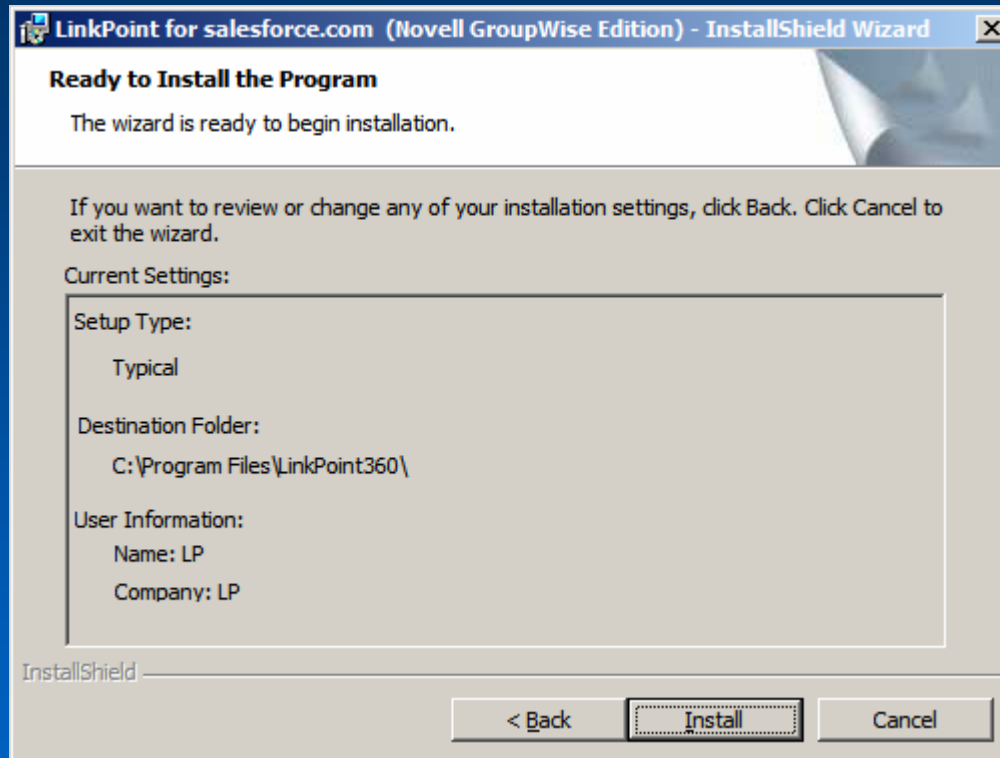
User Name:

Organization:

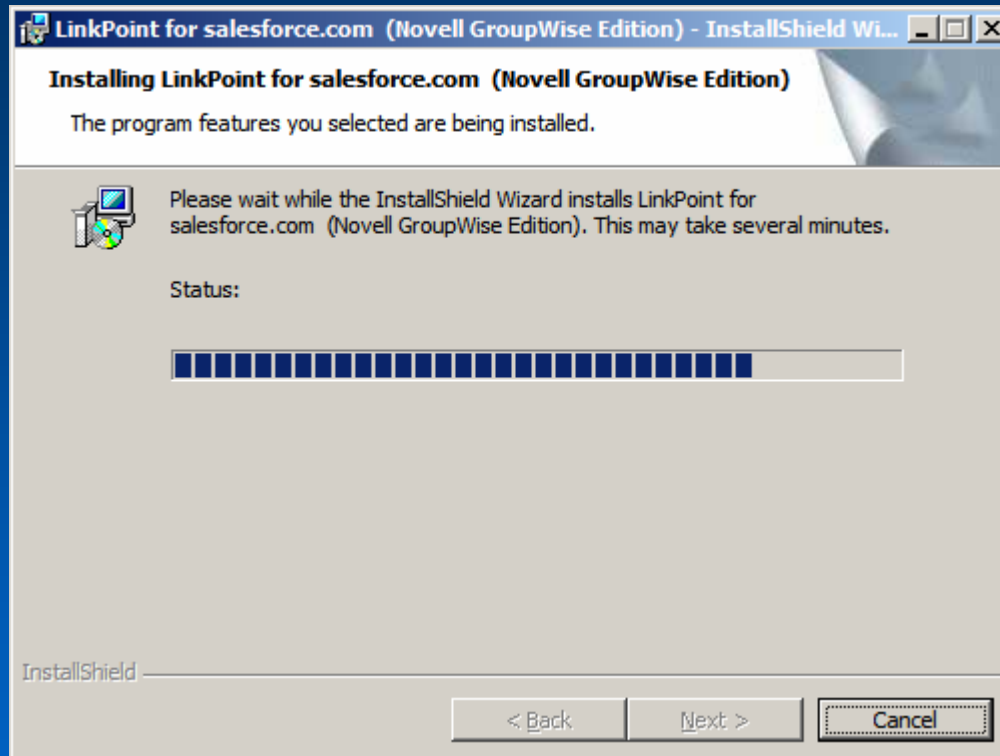
InstallShield

< Back Next > Cancel

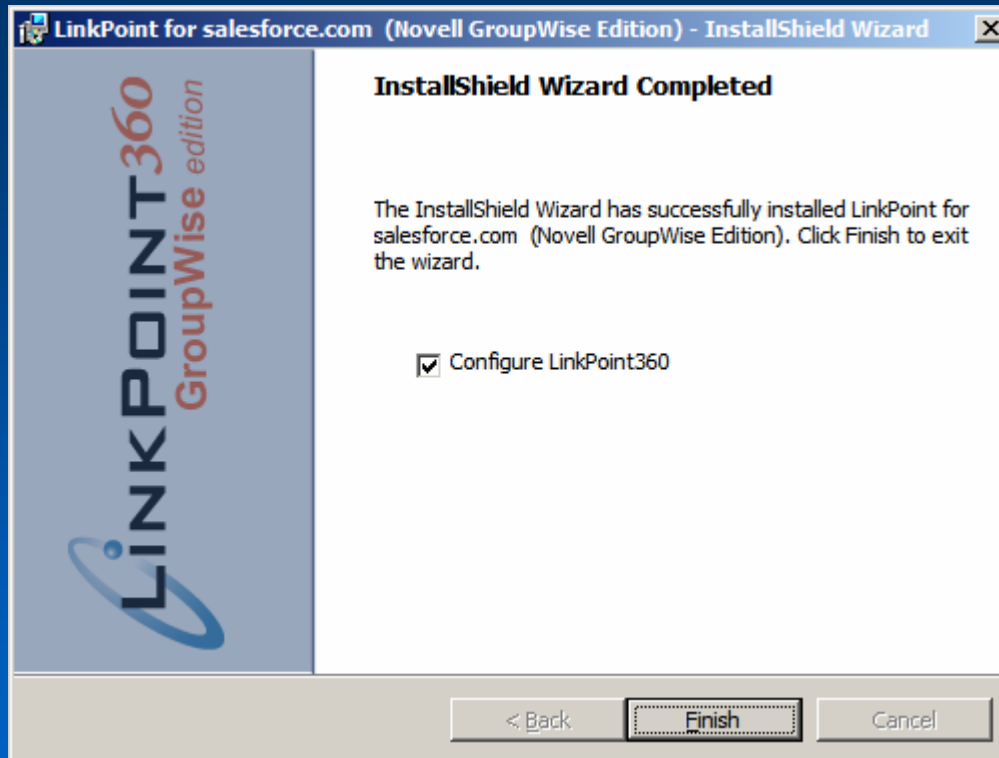
Enter your user name and organization, then click "Next".



Click “Install” to begin the installation.



The LinkPoint install wizard is now installing the software. This may take several minutes.



Click **“Finish”** to configure the LinkPoint software.

Step 2

LinkPoint Software Configuration

LinkPoint Assist - LinkPoint for Salesforce / Novell GroupWise

Credentials Proxy Salesforce Novell GroupWise Updates Sync Other

License Information:

Email Address:

Pass Key:

This evaluation license expired on Thursday, January 18, 2007

Salesforce Credentials:

User Name:

Password:

Confirm:

Test Connection

Please note that your User Name and Password may not be recognized by Integrated Windows security.

Novell GroupWise Credentials:

User Name:

Password:

Confirm:

Test Connection

Exit Ok

Ready

Enter in your email address.

Enter the Pass Key supplied to you from LinkPoint360. This Pass Key is only available when you purchase the software.

Enter your salesforce.com user name and password under Credentials.

Enter your GroupWise User name and password under GroupWise Credentials.

Contact Information

The LinkPoint installation tutorial is now complete.
Please contact us for additional Sales or Support
questions.

Sales: 732-212-8401
Support: 732-212-8403

E-mail: info@LinkPoint360.com

Web: <http://www.linkpoint360.com>